

Illinois Job Index



Illinois Coalition for Jobs, Growth & Prosperity

Release
6/22/2007

Data
Jan 1990 / May 2007

Issue
2007.6

www.jobscoalition.org

For the June 2007 Illinois Job Index, the Coalition issued a Positive rating. While the Nation had a positive growth rate, the RMW had a net decline in growth for the second month in a row.

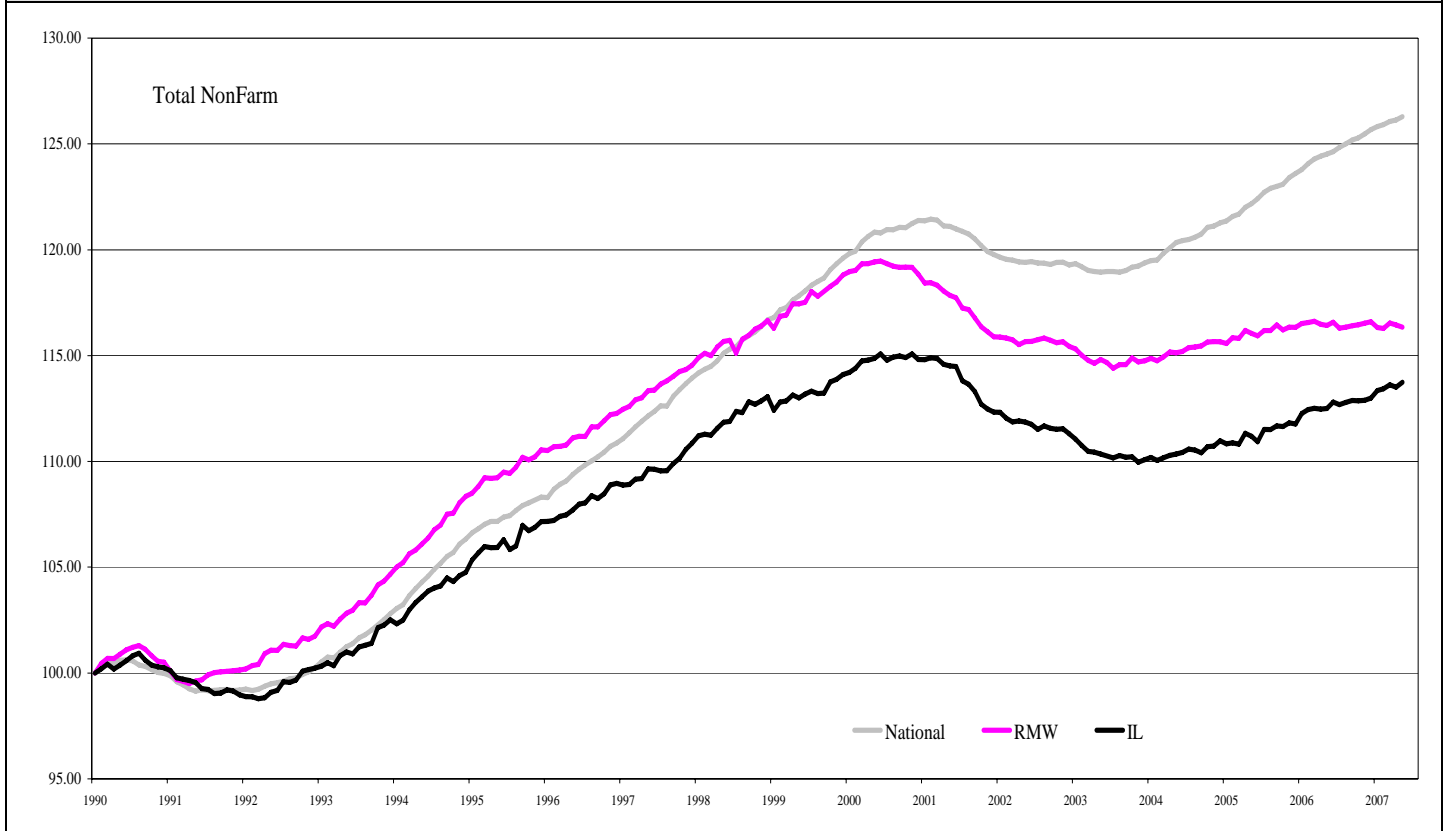
The Illinois Coalition for Jobs, Growth & Prosperity publishes the monthly Illinois Job Index and MSA Report as tools for elected officials, policy leaders and the public. We can better understand the Illinois economy and business climate by comparing and measuring Illinois employment growth rates against those of the Rest of the Midwest (RMW: Indiana, Iowa, Michigan, Missouri, Ohio and Wisconsin) and the Nation. Data and analysis is provided by the Illinois Economic Observatory / Regional Economics Applications Laboratory, University of Illinois.

↑	June 2007 Positive	Apr 2007 - May 2007		Last 12 months		
		Total non-farm employment	Growth Rate %	Number of Jobs	Growth Rate %	Number of Jobs
		Nation	+0.11	+157,000	+1.42	+1,925,000
		RMW	-0.07	-14,800	-0.07	-14,800
		Illinois	+0.20	+12,200	+1.11	+65,800

Talking Points

Illinois Notes	<ul style="list-style-type: none"> By adding 12,200 jobs at 0.20% in June Illinois restored a positive trend begun in November 2006 but interrupted by a net loss in April. This is the largest number of jobs added to Illinois payroll since February 2007. In spite of a negative rating in April, Illinois registered a healthy monthly average growth rate in 2007 of 0.13% compared to the average growth rate of 0.08% in the recent recovery period for Illinois since early 2004. Illinois was ahead of both the Nation and RMW in job creation performance in May, for the first time since January 2007. While the Nation has continued a positive rating since September 2003, the RMW has fluctuated, recording negative growth in May and June 2007. In terms of 12-months job creation RMW is on a negative trend since January 2007 based in revised data. The Nation grew by 1.42% and Illinois by 1.11% while RMW registered a negative growth of 0.07%. Though Illinois did better than both Nation and RMW during June, since 1990 Nation gained 26.28% followed by RMW at 16.34% and Illinois at 13.75%.
Nation Notes	<ul style="list-style-type: none"> During May 157,000 new jobs were added to US payroll which is the third largest gain for Nation in 2007 after March and January. The gain for May of 157,000 up from a revised 80,000 gain in April exceeded the 135,000 prediction by economists. The nation grew by 1.42% during the last 12-month period, which based on revised data, is the smallest rate for any consecutive 12-month period since September 2004 (with the exception of April 2007). The average job growth rate in the US in 2007 until May of 0.10% lies below the trend since September 2003 when the country started to recover from the recent recession at an average monthly rate of 0.14%. The average monthly job gain in 2007 at 132,800 is lower than the average monthly job gain in 2006 of 188,600.

Total non-farm Employment growth rate Jan 1990 – May 2007

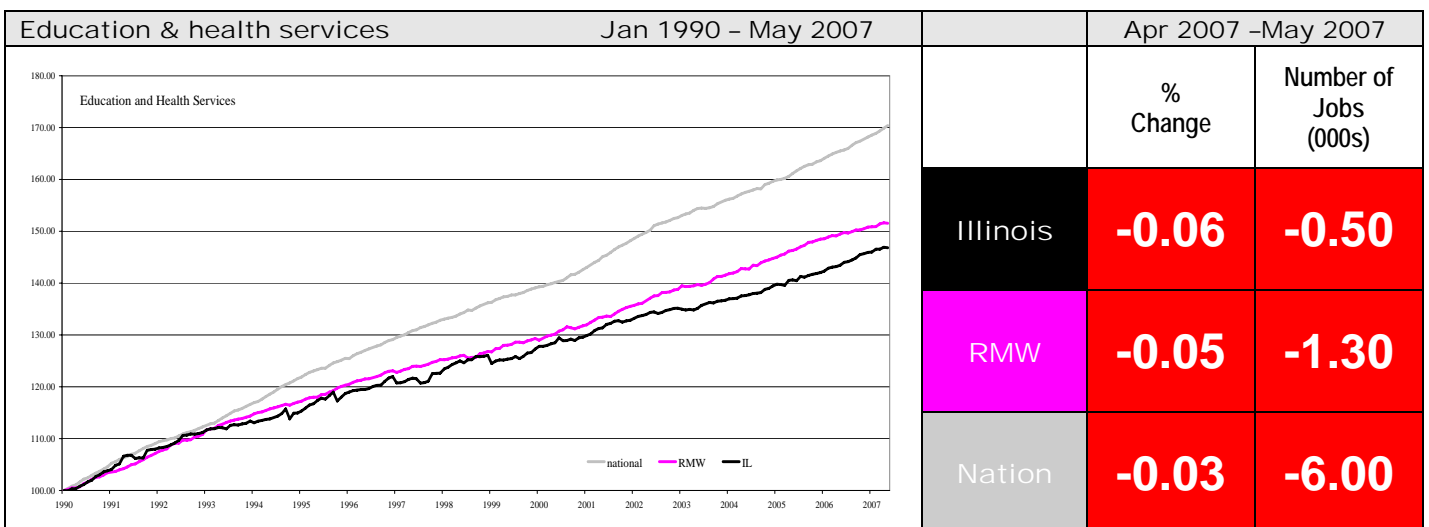
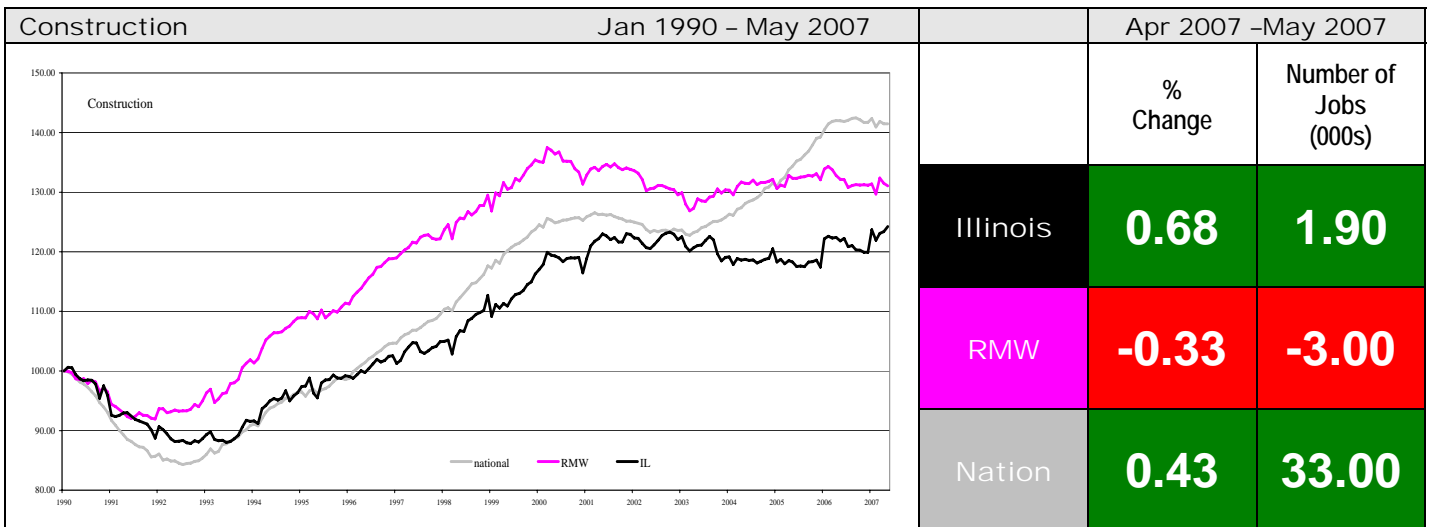


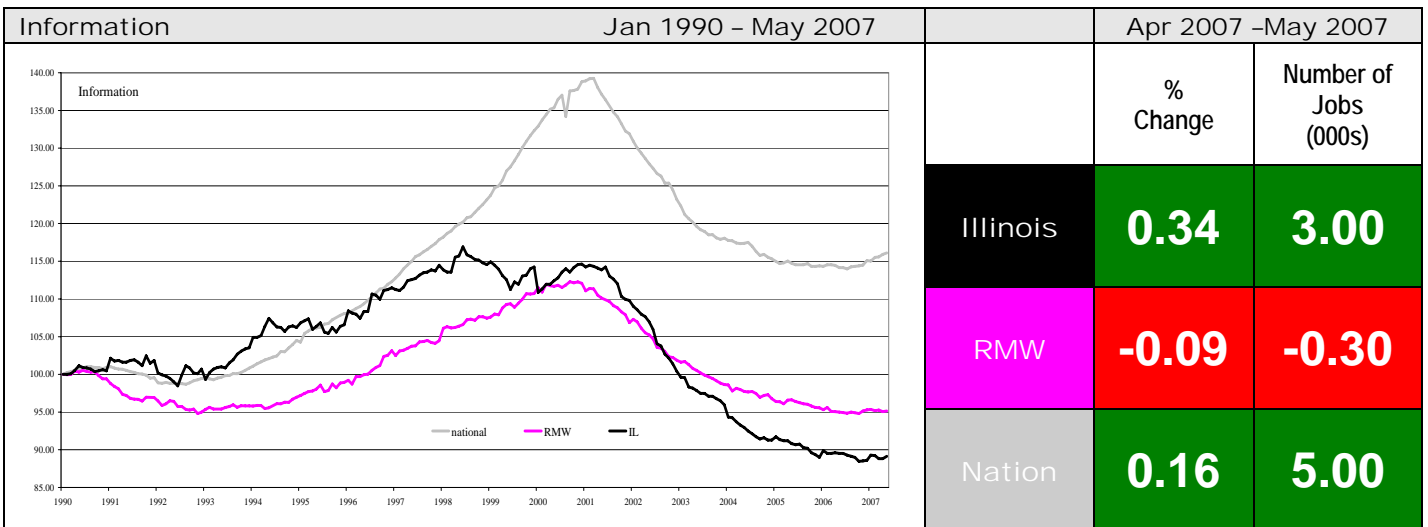
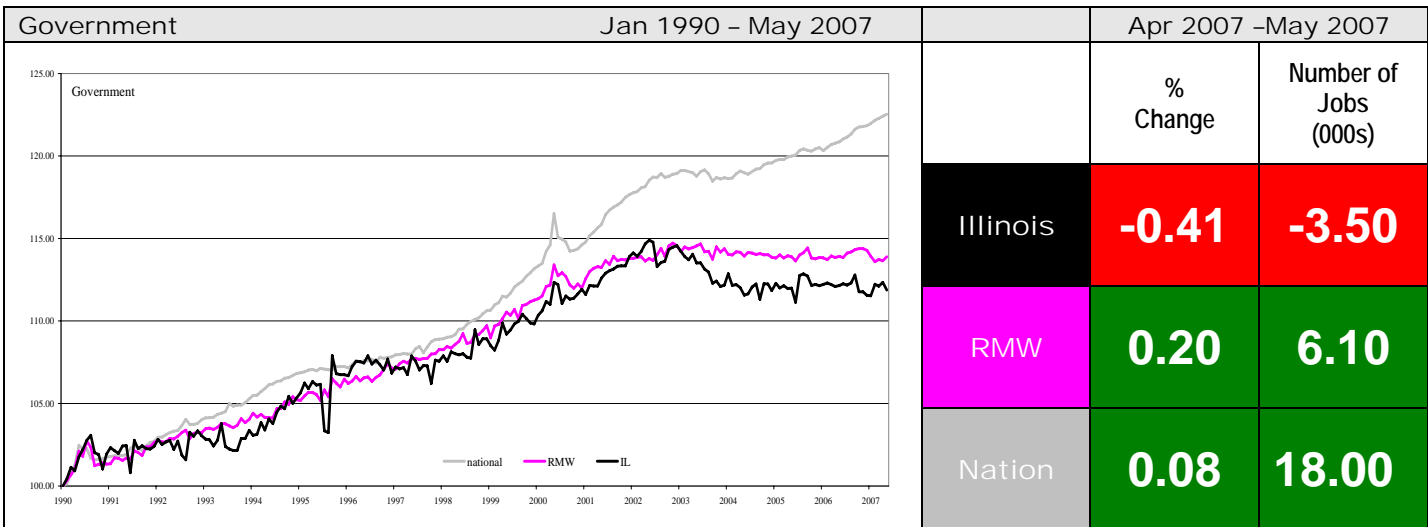
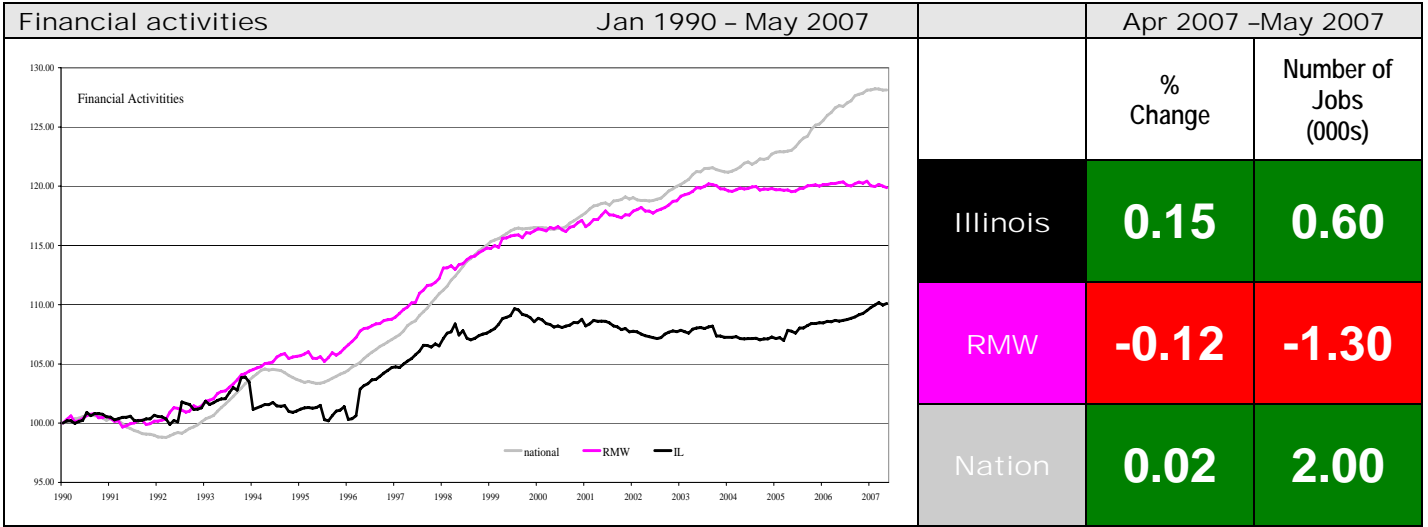
By employment sector:

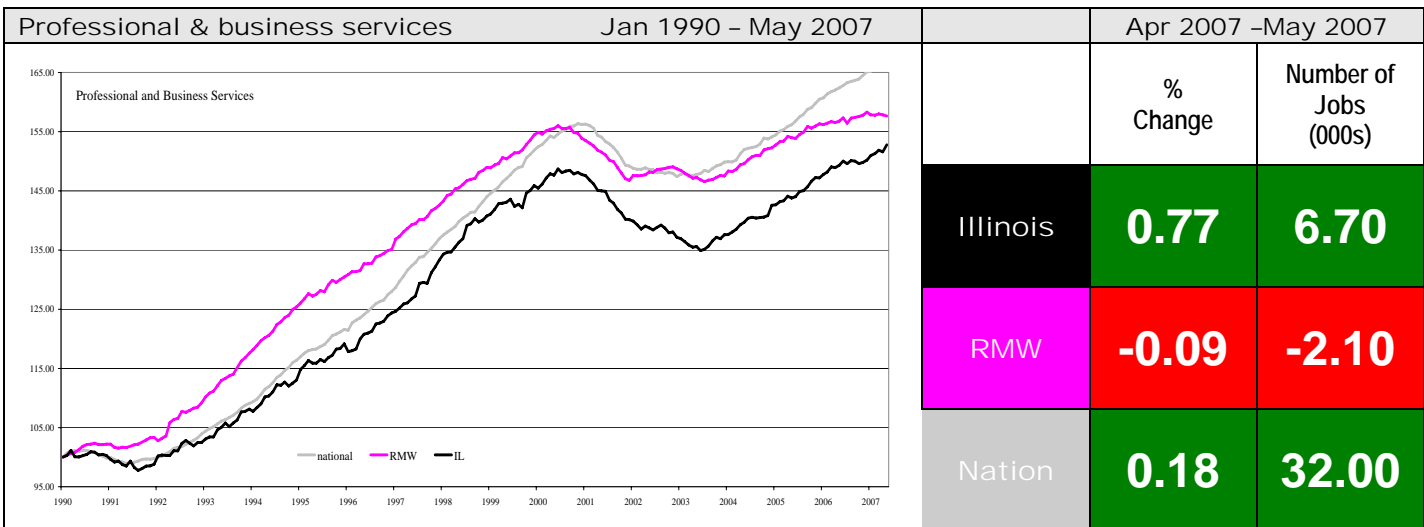
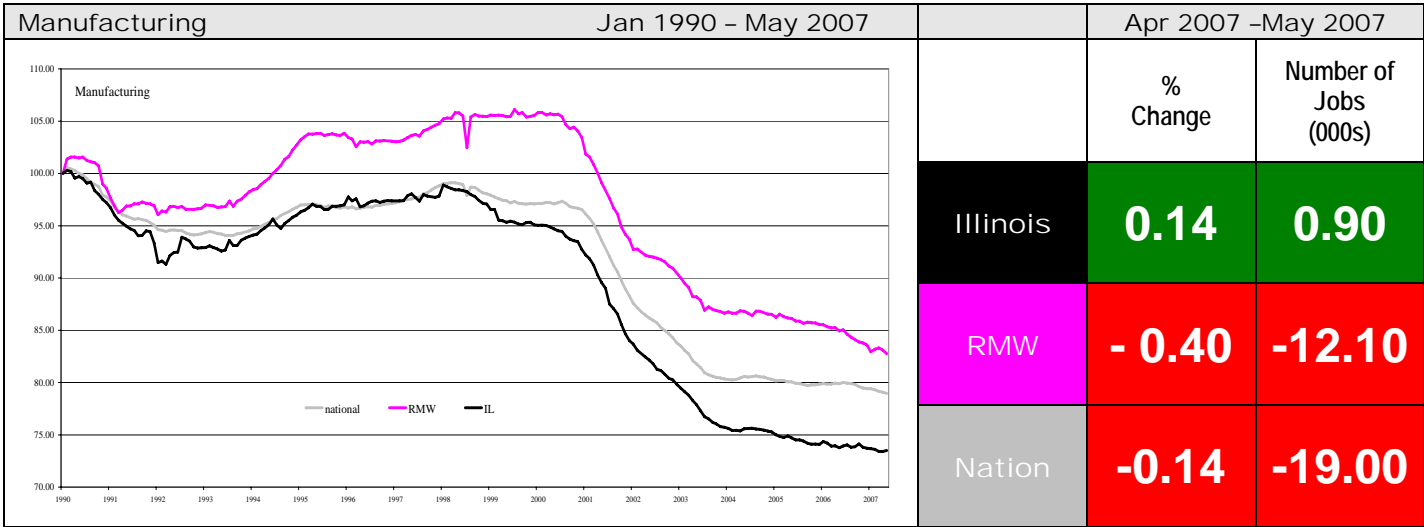
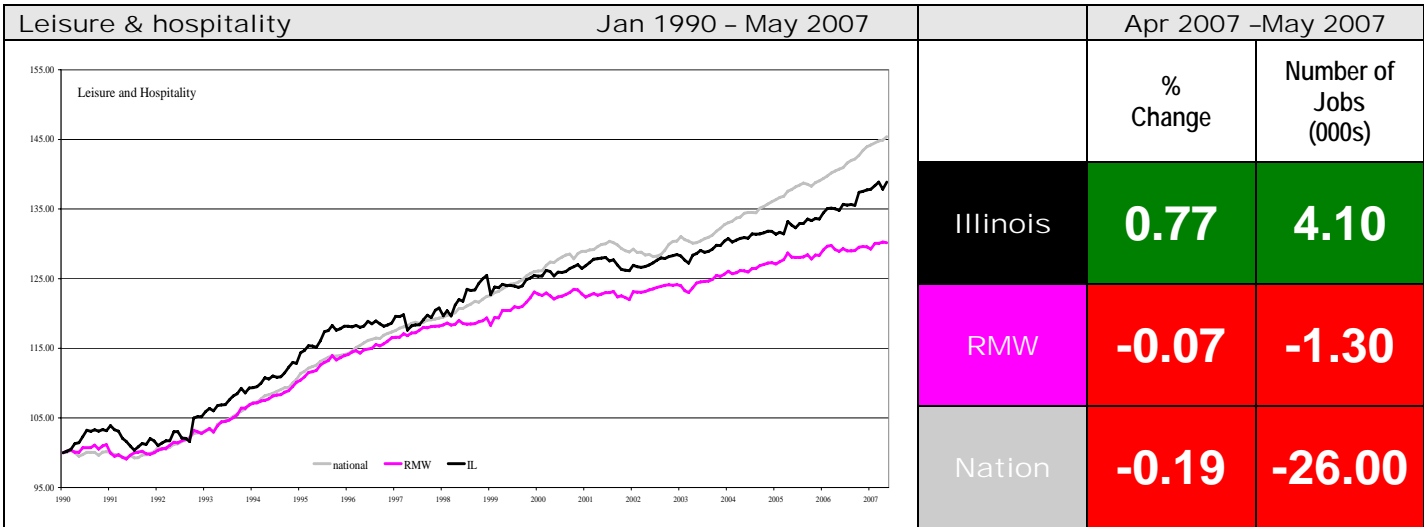
Total non-farm Employment growth rate by sector									
Monthly growth rates	Mar 2007 –May 2007			Jan 1990 –May 2007					
	Illinois vs. RMW	Illinois vs. Nation	Midwest vs. Nation	Illinois		RMW Rate %	Nation Rate %	RMW Rate %	Nation Rate %
				vs. RMW	vs. Nation				
Construction	+	+	-	-	-	55,100	24.23	31.06	41.48
Education & health	-	-	-	-	-	247,700	46.82	51.54	70.39
Financial activities	+	+	-	-	-	37,700	10.12	19.87	28.13
Government	-	-	-	-	-	89,500	11.87	13.89	22.53
Information	+	+	-	-	-	-14,200	-10.87	-4.88	16.10
Leisure & hospitality	+	+	+	+	-	150,100	38.89	30.17	45.39
Manufacturing	+	+	-	-	-	-244,700	-26.49	-17.24	-21.04
Professional & business services	+	+	-	-	-	301,200	52.77	57.67	66.00
Trade, transportation & utilities (TTU)	+	+	-	-	-	54,200	4.72	9.65	16.33
Other Services	+	+	-	+	-	54,900	26.73	22.12	29.78

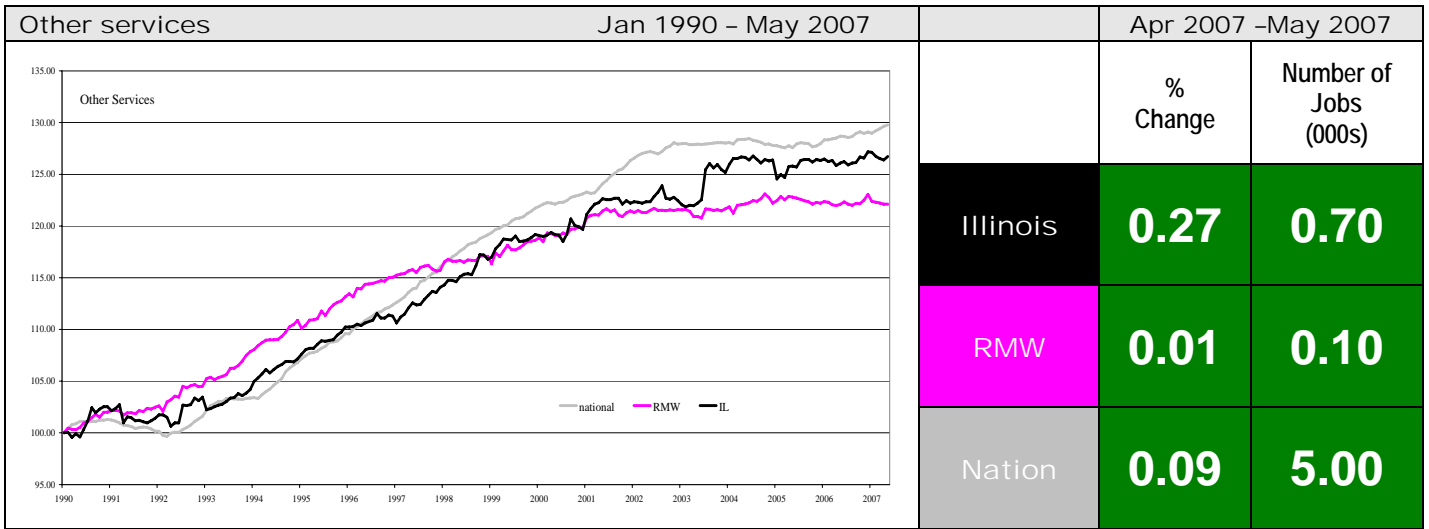
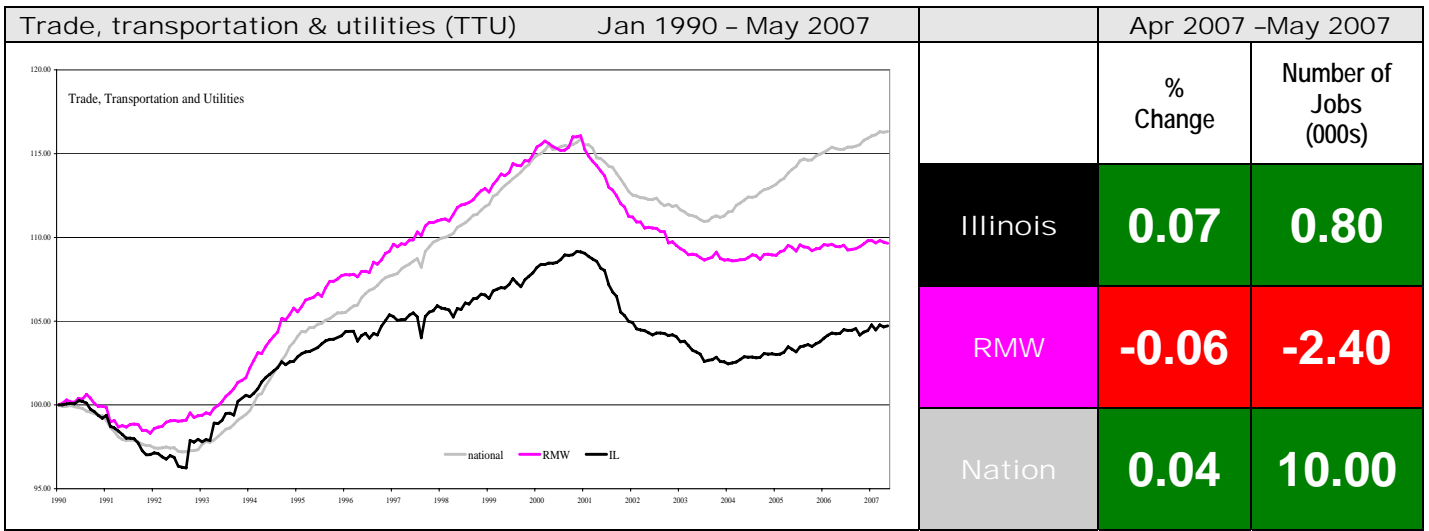
Sector notes

- The 0.20% growth of Illinois in May was contributed by many economic sectors. Compared to April, Government and Education and Health Services experienced loss of performance by -0.61% and -0.32% respectively, while all other sectors had a net gain in performance compared to April, Leisure and Hospitality (1.52%), Professional and Business Services (0.96%) and Construction (0.43%) ranked highest among them.
- Following are the leading sectors at the national level in order of job creation:
 - Construction: 33,000 (0.43%)
 - Professional and Business Services: 32,000 (0.18%)
 - Government: 18,000 (0.08%)
- During May, the following sectors of US economy recorded net loss:
 - Leisure and Hospitality (-0.19%)
 - Manufacturing: 19,000 (-0.14%)
 - Education and Health Services: 6,000 (-0.03%)
- Following are the major sectors in order of their contribution to Illinois Payroll:
 - Professional and Business Services: 6,700 (0.77%)
 - Leisure and Hospitality: 4,700 (0.77%)
 - Construction: 1,900 (0.68%)
- Net loss of job in May was recorded for the following sectors in Illinois:
 - Government: 3,500 (-0.41%)
 - Education and Health Service: 500 (-0.06%)
- Manufacturing, Information and Government sectors recorded net loss of job over the last 12-months while all other sectors maintained a positive rating. Professional and Business Services, Education and Health Services and Leisure and Hospitality contributed most of the jobs during this period.









ABOUT: The Illinois Coalition for Jobs, Growth & Prosperity is a not-for-profit 501-c-4 organization. Coalition founding members include the Chicagoland Chamber of Commerce, the Illinois Business Roundtable, the Illinois Civil Justice League, the Illinois Manufacturers' Association, and the Illinois State Chamber of Commerce. Established to provide Illinois voters with information about government-related issues that have a direct effect on jobs, the Coalition represents firms employing more than a million Illinois workers.