

# Illinois Job Index



Illinois Coalition for Jobs, Growth & Prosperity

Release  
7/22/2007

Data  
Jan 1990 / Jun 2007

Issue  
2007.7

[www.jobscoalition.org](http://www.jobscoalition.org)

**For the July 2007 Illinois Job Index, the Coalition issued a Positive rating. While both the Nation and RMW had a positive rating, Illinois surpassed both of them in growth rate.**

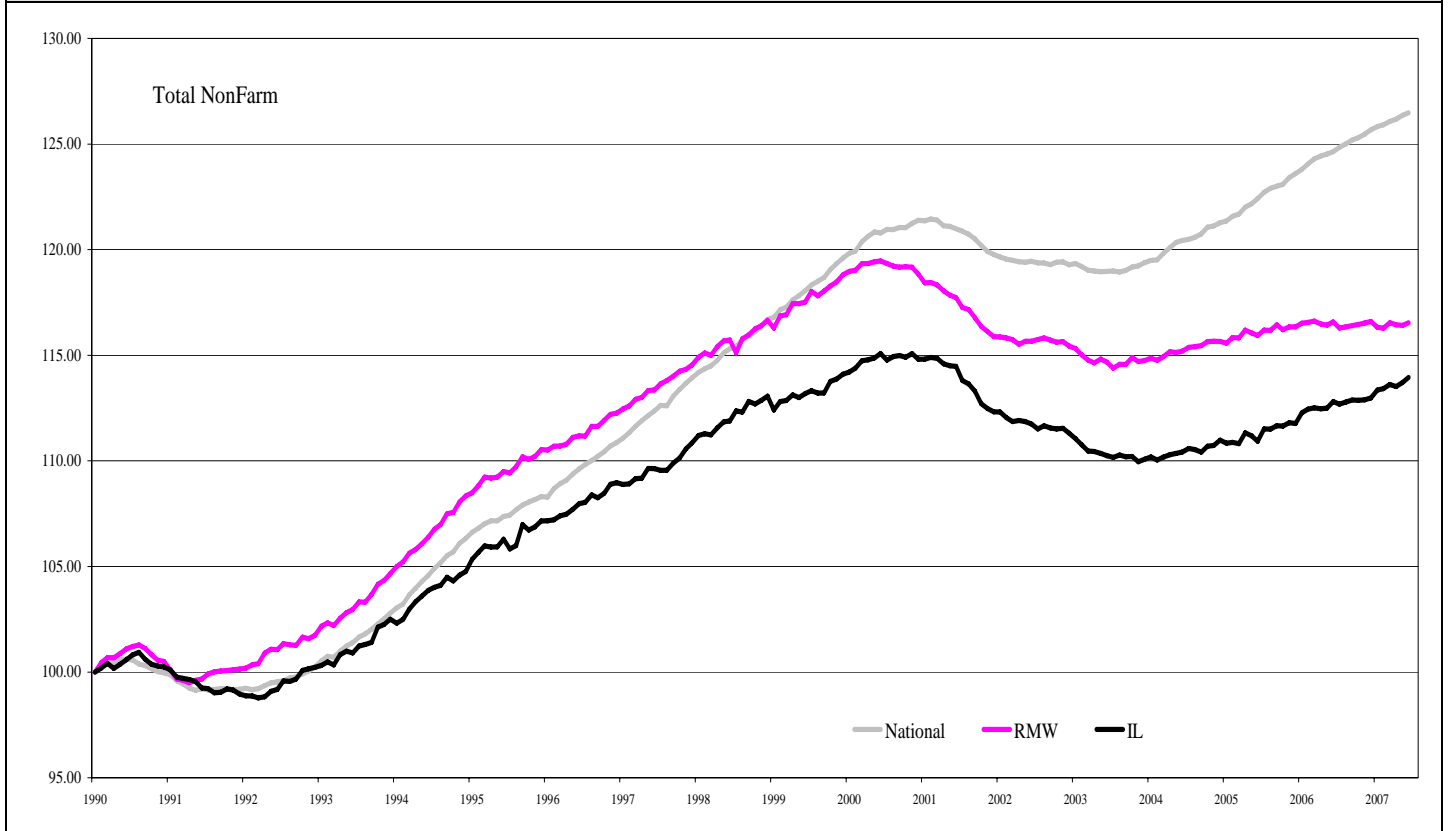
The Illinois Coalition for Jobs, Growth & Prosperity publishes the monthly Illinois Job Index and MSA Report as tools for elected officials, policy leaders and the public. We can better understand the Illinois economy and business climate by comparing and measuring Illinois employment growth rates against those of the Rest of the Midwest (RMW: Indiana, Iowa, Michigan, Missouri, Ohio and Wisconsin) and the Nation. Data and analysis is provided by the Illinois Economic Observatory / Regional Economics Applications Laboratory, University of Illinois.

↑	July 2007 Positive	May 2007 - Jun 2007		Last 12 months		
		Total non-farm employment	Growth Rate %	Number of Jobs	Growth Rate%	Number of Jobs
		Nation	+0.10	+132,000	+1.48	+2,008,000
		RMW	+0.11	+21,300	-0.03	-6,400
		Illinois	+0.21	+12,400	+1.01	+59,900

## Talking Points

Illinois Notes	<ul style="list-style-type: none"> <li>Illinois maintained a positive trend by adding 12,400 jobs at 0.21% in June. This is the second largest number of jobs added in Illinois payroll in 2007.</li> <li>A 0.21% gain in June enabled Illinois to register an average monthly growth rate of 0.14% in 2007 which is well above the average growth rate of 0.08% in the recent recovery period for Illinois since early 2004.</li> <li>Repeating the pattern of May, Illinois was ahead of both the Nation and RMW in job creation performance in June, which happened for the third time in 2007.</li> <li>In terms of 12-month's job creation, RMW continued a negative trend since January 2007 based on revised data, with a net 0.03% decline. The Nation grew by 1.48% and Illinois by 1.01% over this period.</li> <li>Though Illinois did better than both Nation and RMW during June, since 1990 Nation gained 26.47% followed by RMW at 16.54% and Illinois at 13.95%.</li> <li>Due to a better performance of Illinois compared to RMW in most instances in 2006 and 2007, the gap in the job index between RMW and Illinois came down its lowest value since July 1994.</li> </ul>
Nation Notes	<ul style="list-style-type: none"> <li>During June, 132,000 new jobs were added to US payroll at 0.10%. This is for the second time in 2007 that the growth rate of the Nation is behind Illinois and RMW.</li> <li>The gain in June of 132,000 down from a revised 190,000 gain in May is slightly better than the prediction by the economists for June which was at 125,000.</li> <li>During the last 12-month period, the Nation grew by 1.48% by adding 2,008,000 jobs over last 12 months.</li> <li>The average job growth rate in the US in 2007 until June of 0.11% lies below the trend since September 2003 when the country started to recover from the recent recession at an average monthly rate of 0.14%.</li> <li>The average monthly job gain in 2007 until June at 145,200 is lower than the average monthly job gain in the previous year of 188,600.</li> </ul>

Total non-farm Employment growth rate Jan 1990 – Jun 2007

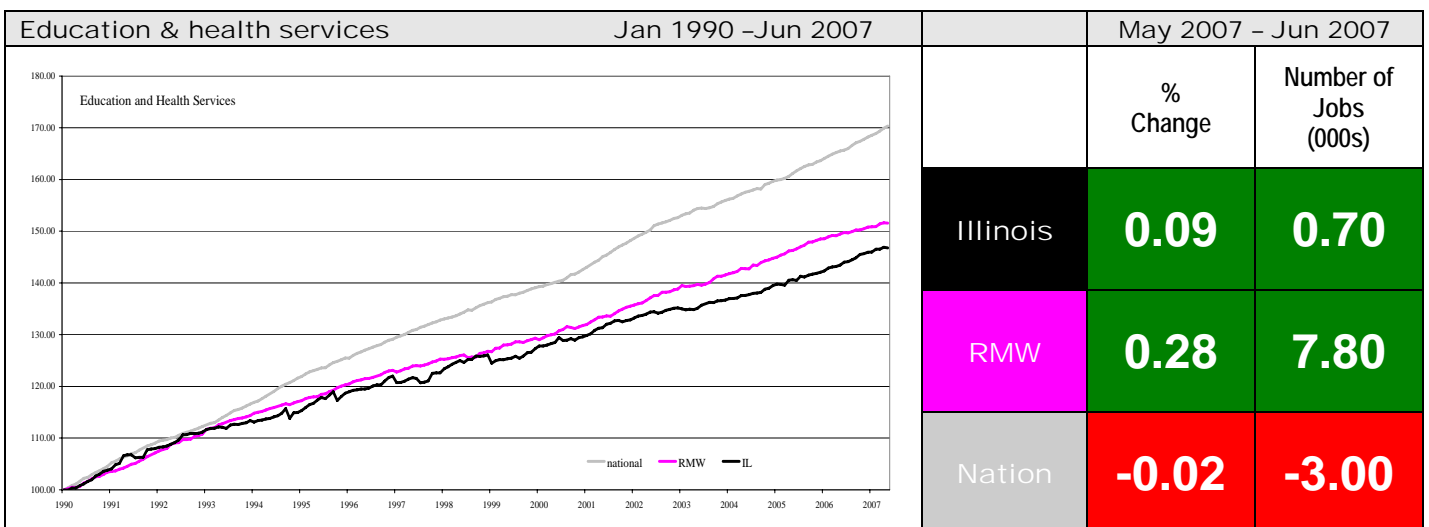
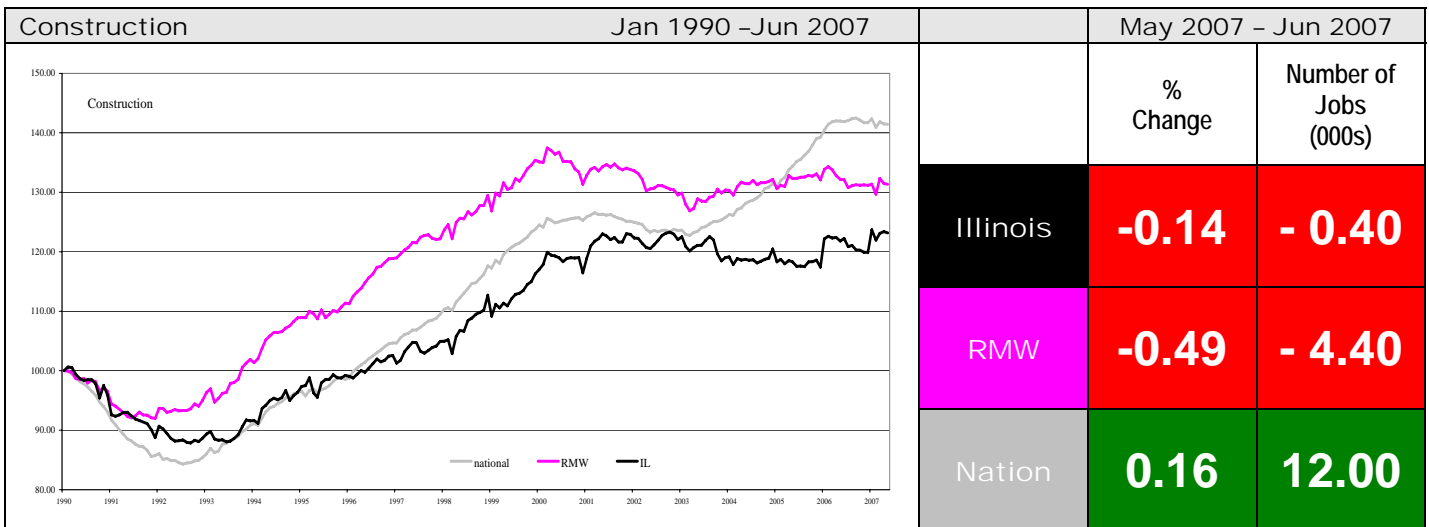


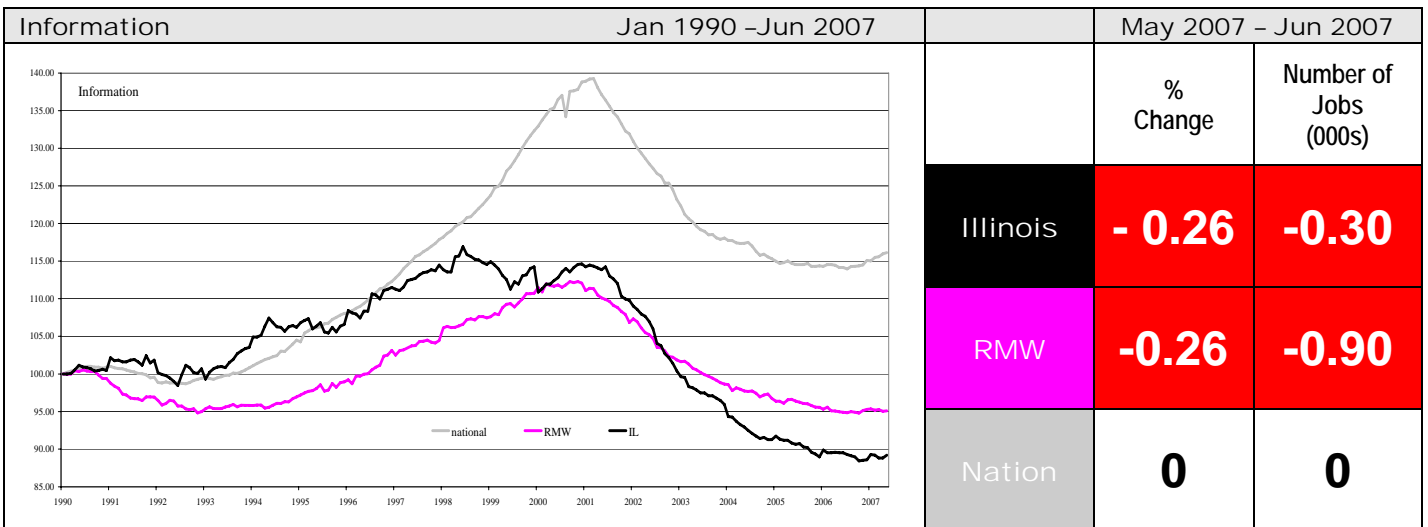
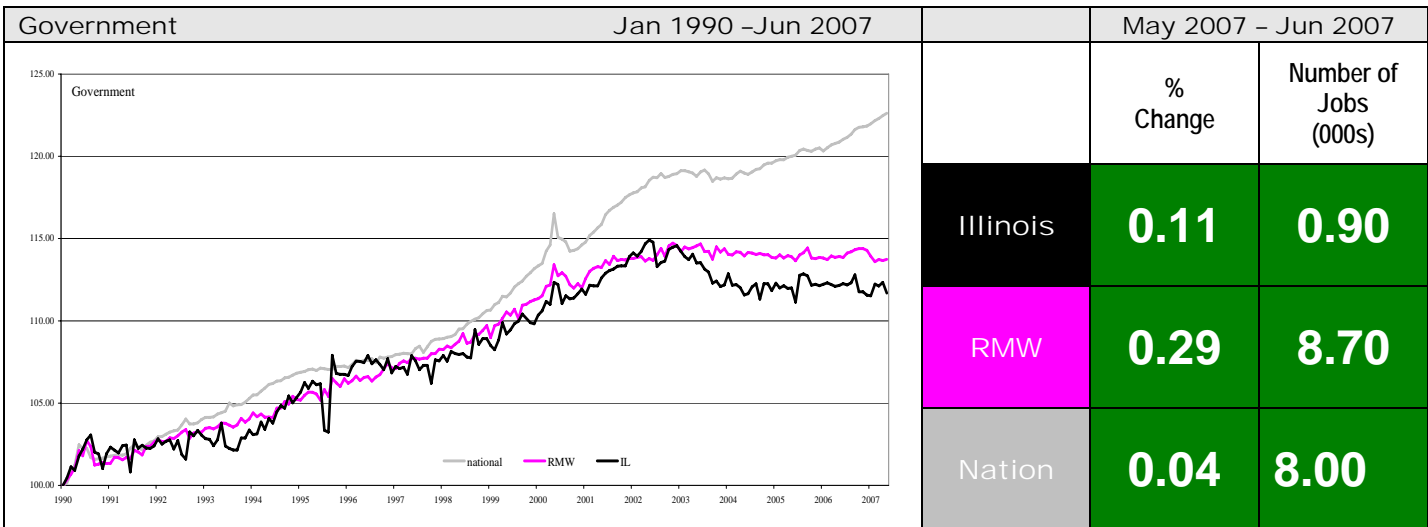
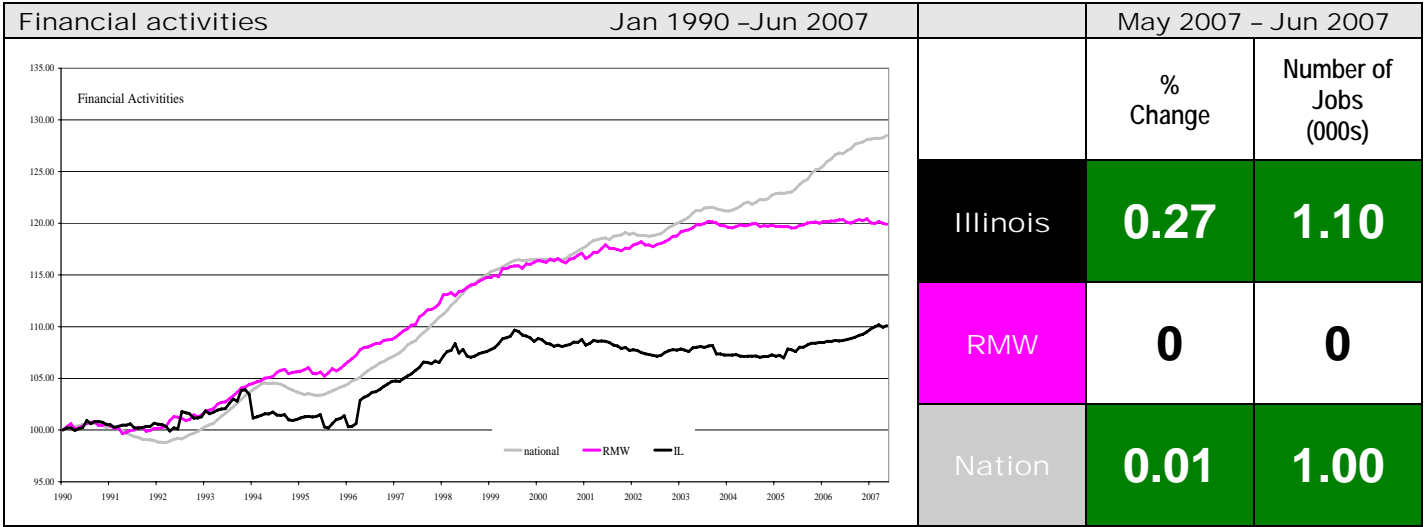
By employment sector:

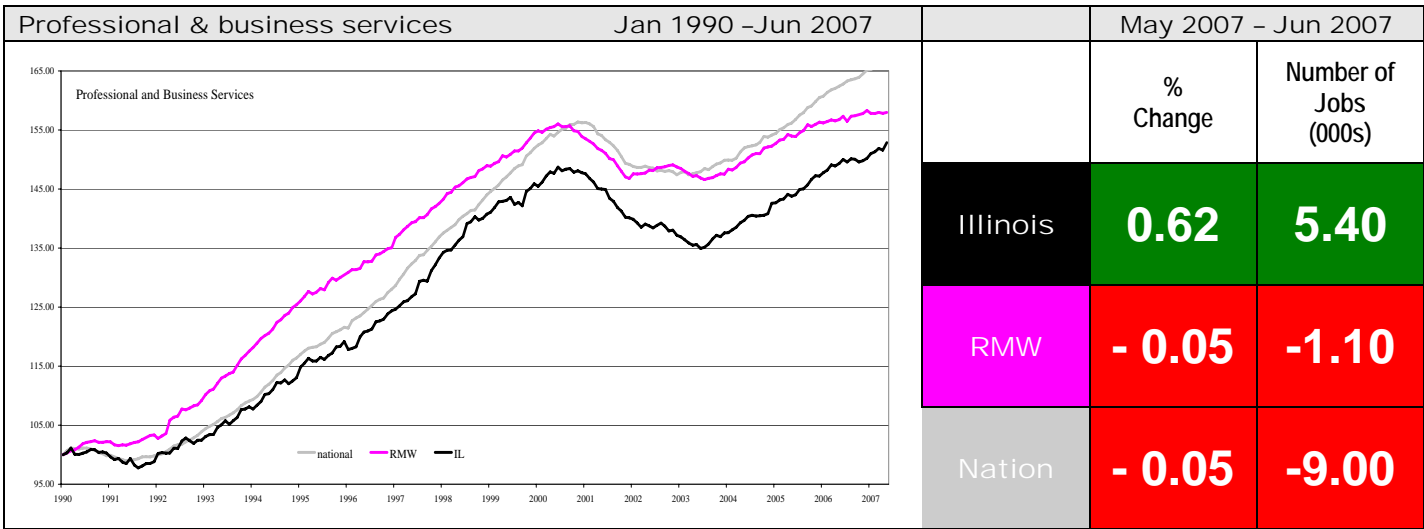
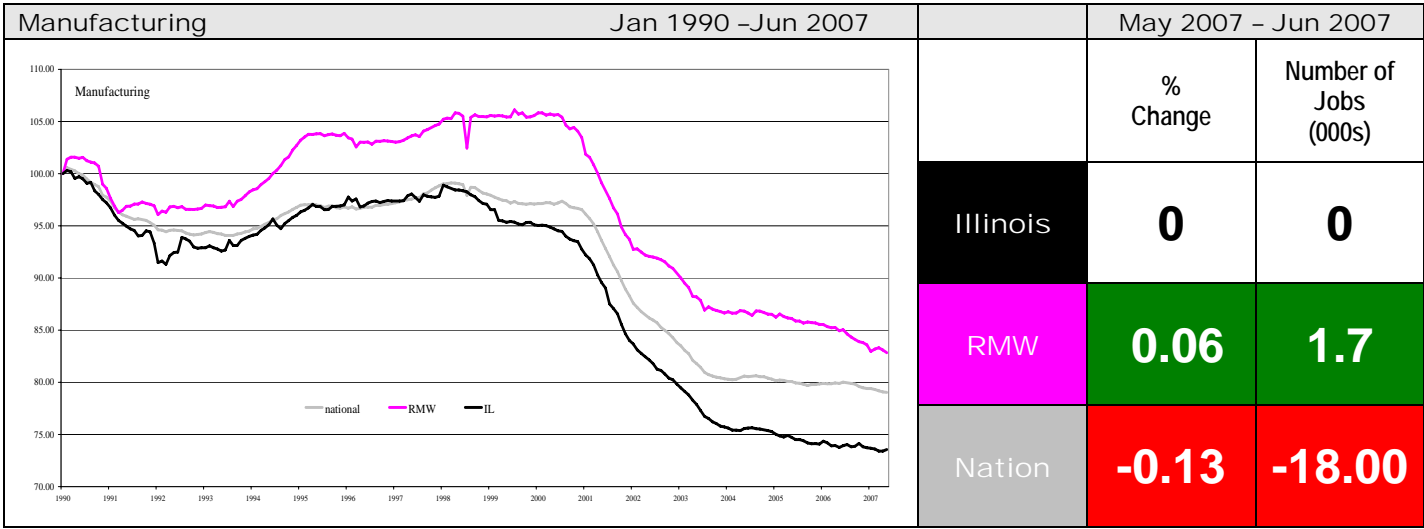
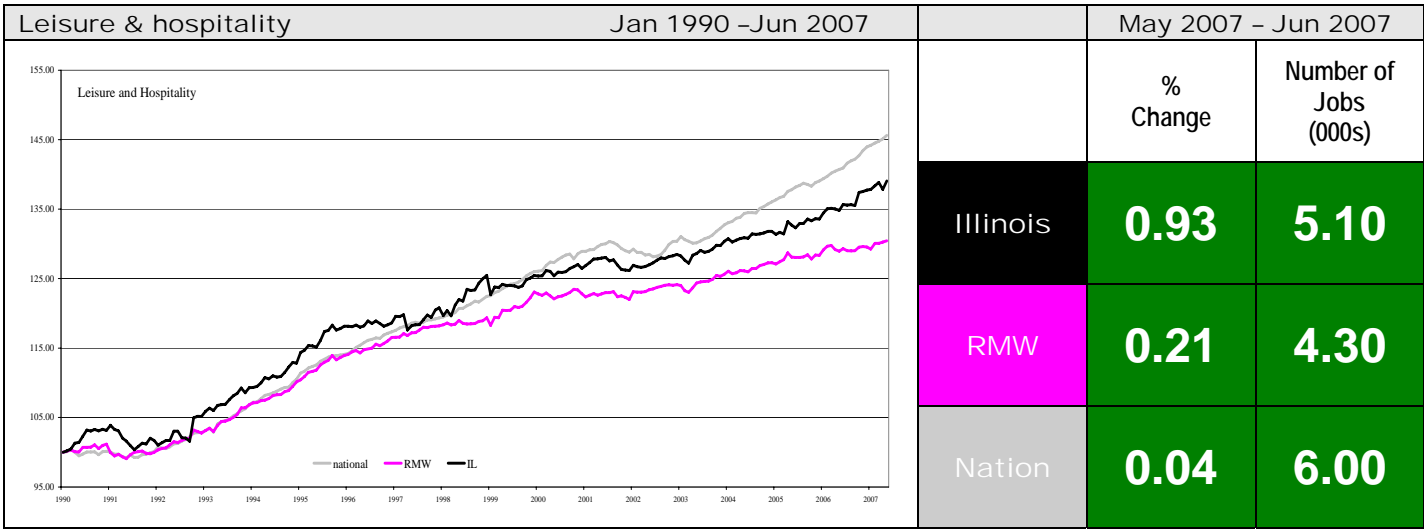
Total non-farm Employment growth rate by sector									
Monthly growth rates	May 2007 – Jun 2007			Jan 1990 – Jun 2007					
	Illinois vs. RMW	Illinois vs. Nation	Midwest vs. Nation	Illinois				RMW	Nation
				vs. RMW	vs. Nation	Number of Jobs	Rate %	Rate %	Rate %
Construction	+	+	+	-	-	52,300	23.00	30.71	41.66
Education & health	-	-	+	-	-	248,100	46.89	52.01	70.89
Financial activities	+	+	-	-	-	38,700	10.38	19.90	28.51
Government	-	+	+	-	-	89,000	11.81	14.07	22.84
Information	Same	-	-	-	-	-14,400	-11.03	-5.16	16.14
Leisure & hospitality	+	+	+	+	-	155,700	40.34	30.71	46.04
Manufacturing	-	+	+	-	-	-244,300	-26.45	-17.12	-21.07
Professional & business services	+	+	+	-	-	307,100	53.80	57.91	65.87
Trade, transportation & utilities (TTU)	-	-	-	-	-	53,600	4.67	9.78	16.38
Other Services	+	+	+	+	-	56,300	27.41	22.71	29.90

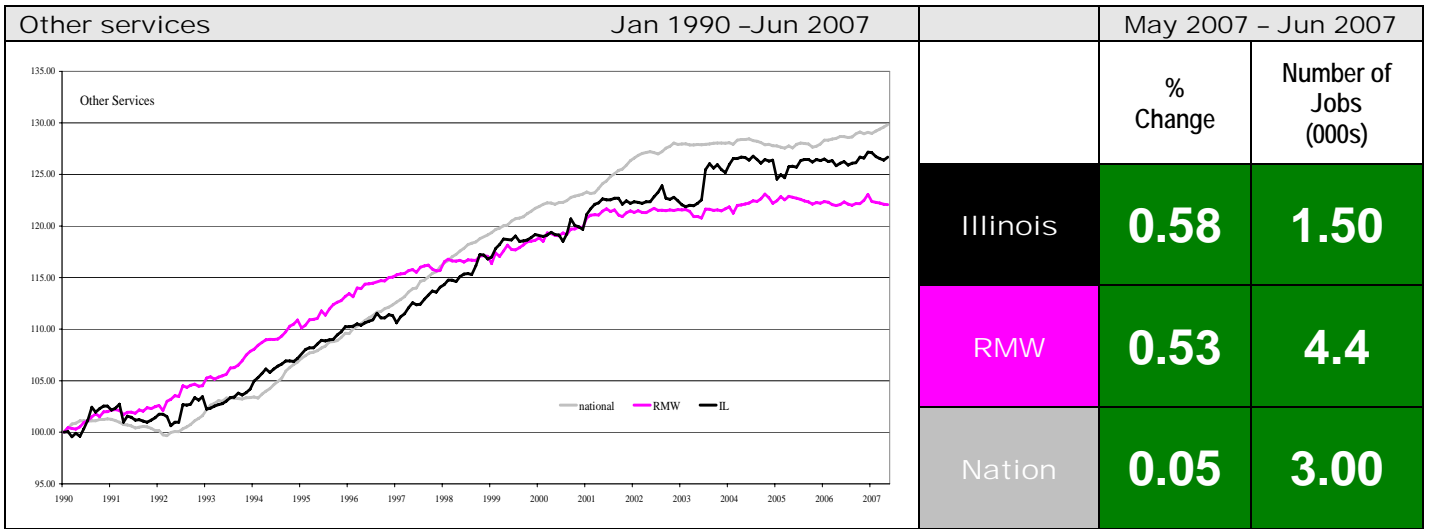
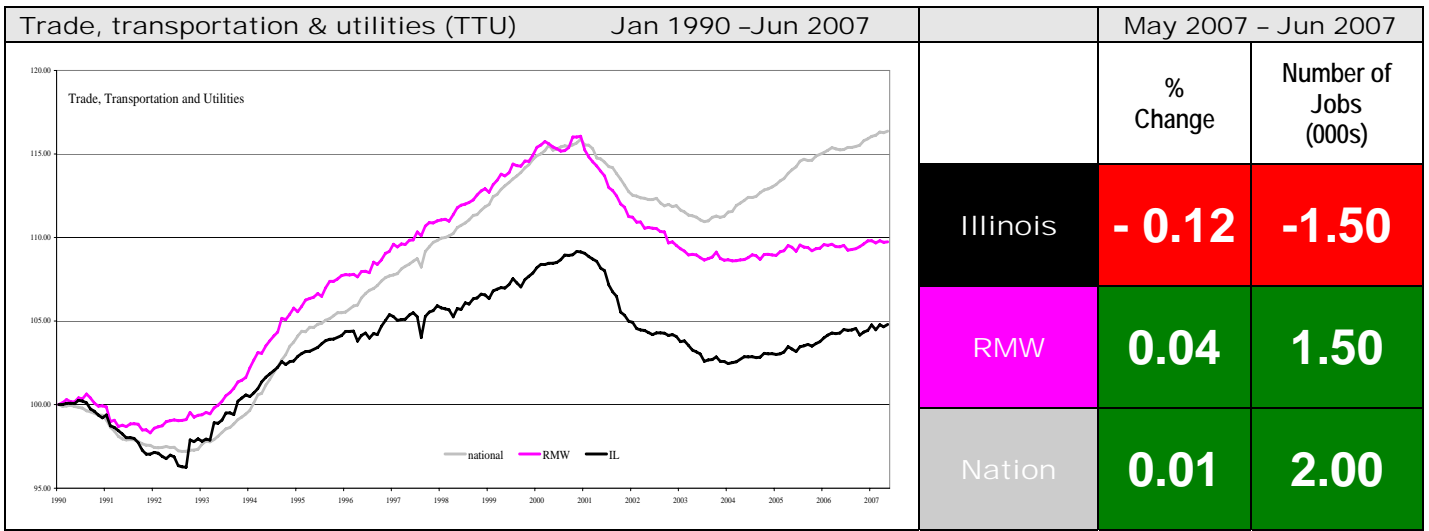
## Sector notes

- During June, the 0.21% growth of Illinois resulted from varied contributions of the economic sectors. Compared to May, Information and Trade, Transport and Utility experienced the highest loss of performance by -0.69% and -0.27% respectively. Among sectors which had a net gain in performance in June, Financial Activities (0.15%) and Education and Health Services (0.19%) ranked highest.
- According to June data following are major sectors at the national level in order of job creation:
  - Construction: 12,000 (0.16%)
  - Government: 8,000 (0.04%)
  - Leisure and Hospitality: 6,000 (0.04%)
- During June, the following sectors of US economy recorded net loss:
  - Manufacturing: 18,000 (-0.13%)
  - Professional and Business Services (-0.05%)
  - Education and Health Services: 3,000 (-0.02%)
- Following sectors made notable contribution to Illinois Payroll in June:
  - Professional and Business Services: 5,400 (0.62%)
  - Leisure and Hospitality: 5,000 (0.93%)
  - Other Services: 1,500 (0.58%)
- Net loss of jobs in May was recorded for the following sectors in Illinois:
  - Trade, Transportation and Utilities: 1,500 (-0.12%)
  - Construction: (-0.14%)
- As regards 12-months job creation, Manufacturing, Information and Government recorded net loss of job while all other sectors maintained a positive rating as of June. Among the major contributors were Professional and Business Services, Education and Health Services and Leisure and Hospitality.









**ABOUT:** The Illinois Coalition for Jobs, Growth & Prosperity is a not-for-profit 501-c-4 organization. Coalition founding members include the Chicagoland Chamber of Commerce, the Illinois Business Roundtable, the Illinois Civil Justice League, the Illinois Manufacturers' Association, and the Illinois State Chamber of Commerce. Established to provide Illinois voters with information about government-related issues that have a direct effect on jobs, the Coalition represents firms employing more than a million Illinois workers.