

# Illinois

## Job Index:

### MSA Report



Illinois Coalition for Jobs, Growth & Prosperity

Release 5/5/2007	data Jan 1990 / Mar 2007	Issue 10.1	www.jobscoalition.org
---------------------	-----------------------------	---------------	-----------------------

As a companion to the April 2007 Illinois Job Index that reports a Positive **Rating**, this MSA Report provides a localized picture on Illinois job growth and allows for comparisons between local economies, Illinois, Nation and Rest of the Midwest.

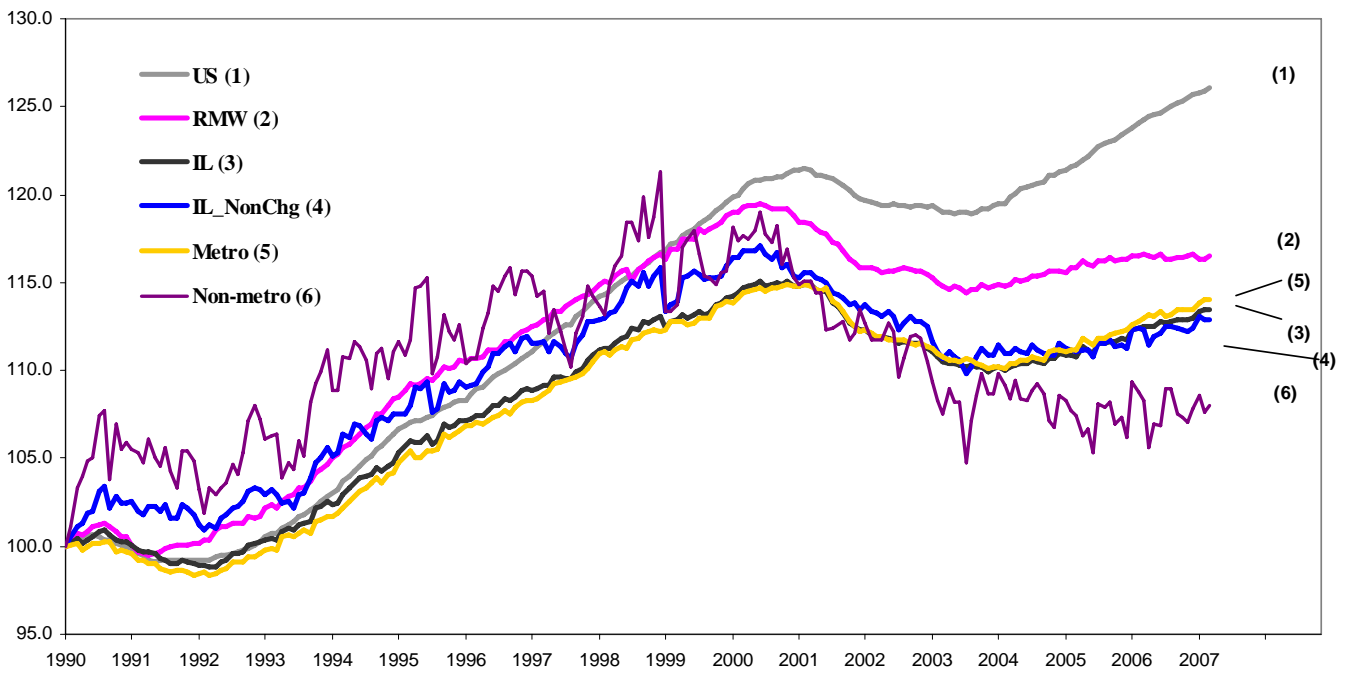
April 2007	Total non-farm employment	Feb 2007 -Mar 2007		Last 12 months	
		Growth Rate (%)	Number of Jobs	Growth Rate (%)	Number of Jobs
	Illinois non-Metro (Rural)	+0.41	+2100	-0.25	-1,300
	Illinois non-Chicago (Downstate)	+0.04	+600	+0.54	+9,100
	Illinois Metro	+0.02	+1,300	+0.97	+52,500
	Illinois	+0.06	+3,400	+0.86	+51,200
	Rest of Midwest (RMW)	+0.23	+45,800	-0.06	-12,800
	Nation	+0.13	+180,000	+1.45	+1,963,000

The Illinois Coalition for Jobs, Growth & Prosperity publishes the monthly Illinois Job Index and MSA Report as tools for elected officials, policy leaders and the public. We can better understand the Illinois economy and business climate by comparing and measuring Illinois employment growth rates against those of the Rest of the Midwest (RMW: Indiana, Iowa, Michigan, Missouri, Ohio and Wisconsin) and the Nation. Data and analysis is provided by the Illinois Economic Observatory / Regional Economics Applications Laboratory, University of Illinois. The MSA data (unless noted) were seasonally adjusted to be consistent with state totals.

### Talking Points

State, Downstate & Metro	<ul style="list-style-type: none"> <li>By adding 3,400 new jobs at a 0.06% growth rate during March, the same rate as in February, Illinois has maintained a positive rating since November 2006.</li> <li>While the growth rate in Illinois payroll was the same as February, the relative performance of the Chicago versus Downstate or Metro versus Non-metro varied significantly from February.</li> <li>Downstate, based on revised data, added 600 new jobs (0.04%) in March recovering from a net loss in previous month. Chicago, on the other hand, experienced a slower growth rate of 0.07% by adding 2,800 new jobs in March compared to a 0.16% growth in January.</li> <li>Illinois non-metro registered a 0.41% growth rate by adding 2100 jobs in March as opposed to a negative growth in February. Metro Illinois, on the other hand recorded a low net growth of 0.02% by adding 1,300 jobs in March as opposed to a 0.15% growth rate in February.</li> <li>As regards 12-month's job creation, in Illinois the growth rate of 0.86% in March was comparable to that in February.</li> <li>Non-metro continued a negative rating by losing 1,300 jobs over last 12 months at -.25% whereas Metro recorded a 0.97% growth by adding 52,500 jobs. However, by adding 42,100 jobs at 0.99%. Chicago maintained a positive rating far ahead of downstate which added 9,100 jobs (0.54%) over last 12 months.</li> </ul>
MSA page (2-3)	<ul style="list-style-type: none"> <li>While the overall growth rate of for Illinois Metro was on the low side in March, four MSAs recorded a net job gain. Chicago added 2,800 jobs at 0.18% followed by Decatur, Rockford and Davenport -Rock Island - Moline each adding 100 jobs at 0.18%, 0.06% and 0.05% growth rate respectively.</li> <li>Compared to February, the highest performance gain in March was recorded for Kankakee; there was no growth but this contrasted with a 0.89% decline the previous month. Decatur followed, growing by 0.18% up from a loss of 0.36%. However, Champaign-Urbana experienced the deepest fall of performance declining by 0.35% down from a 0.53% growth in February. .</li> <li>Among the MSAs, Metro-East lost the most jobs, 900 (-0.37%) followed by Peoria and Champaign -Urbana which lost 400 jobs each at -0.22 and -0.35% respectively.</li> <li>Over last 12-month period, Rockford grew fastest at 1.99% followed by Decatur at 1.48%. The largest, 42,000 jobs however, was added by Chicago followed by Rockford which added 3,100 jobs in that period. None of the MSAs registered a negative growth.</li> </ul>

Total non-farm Employment growth rate Jan 1990 - Mar 2007



Talking Points

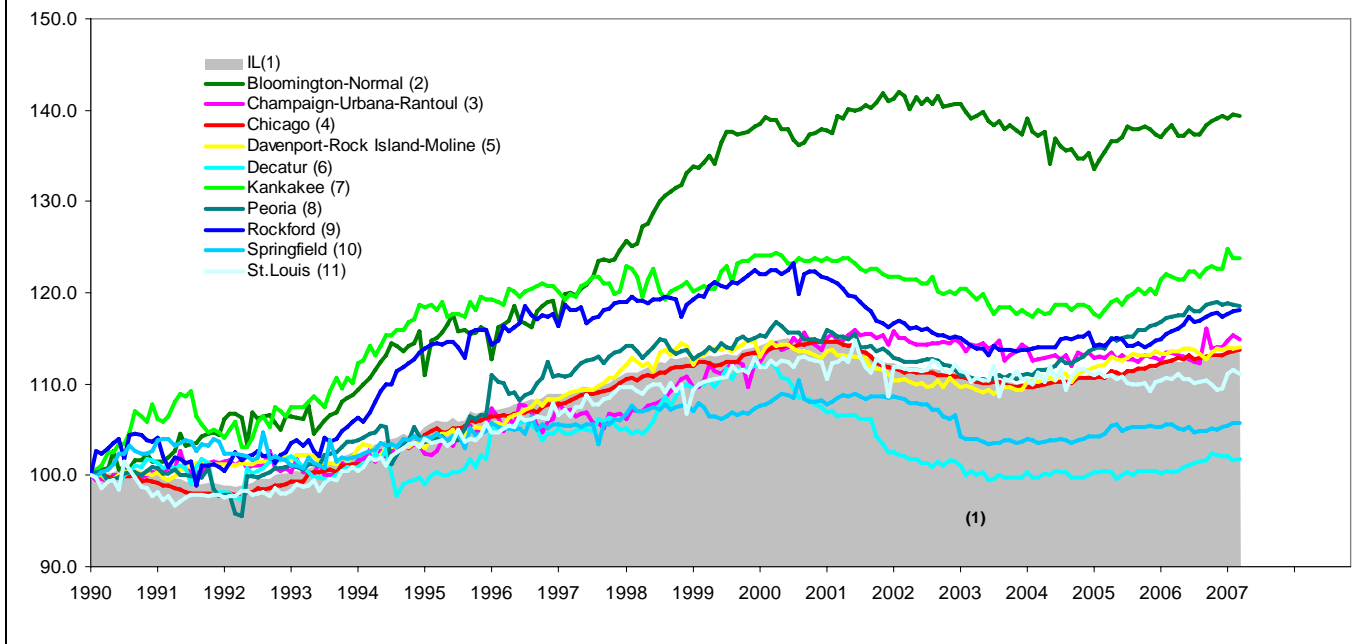
State, Downstate & Metro

- Though the Illinois job market continues to expand, and has done so since November 2006, the rate has slowed down since February 2007.
- Growth rate for Metro slowed down in March for a 0.02% growth rate whereas Non-Metro had a notable 0.41% growth.
- Owing to fall in the job growth rate of Illinois and a rise in growth rate for RMW in March, the gap between job index of Illinois and RMW increased after narrowing since November 2006.
- Net decline in February and slow growth in March curbed the sharp trend of Downstate's growth since December 2006.

By MSA

Total non-farm employment Seasonally adjusted unless noted*	Jan 2007 - Mar 2007			Last 12 months	
	Change compared to Illinois	Growth Rate %	Number of Jobs	Growth Rate %	Number of Jobs
Bloomington-Normal (B-N)	-	-0.11	-100	0.78	700
Champaign-Urbana (C-U-R)	-	-0.35	-400	1.25	1,400
Chicago	+	0.07	2,800	0.99	42,100
Davenport-Rock Island-Moline (D-R-M)	-	0.05	100	0.37	700
Decatur	+	0.18	100	1.48	800
Kankakee	-	0.00	0	1.61	700
Peoria	-	-0.22	-400	0.93	1,700
Rockford	+	0.06	100	1.99	3,100
Springfield	-	0.00	0	0.18	200
Metro-East*	-	-0.37	-900	0.46	1,100
<b>Illinois</b>		<b>0.06</b>	<b>3,400</b>	<b>0.86</b>	<b>51,200</b>

Total non-farm Employment growth rate Jan 1990 – Mar 2007



Shaded area on above chart represents Illinois growth.

MSA DESCRIPTION: **Bloomington-Normal (B-N)**: McLean Co. **Champaign-Urbana (C-U-R)**: Champaign Co., Ford Co. & Piatt Co. **Chicago**: Cook Co. IL, DeKalb Co. IL, DuPage Co. IL, Grundy Co. IL, Kane Co. IL, Kendall Co. IL, Lake Co. IL, McHenry Co. IL, Will Co. IL & Kenosha Co. WI **Davenport-Moline-Rock Island (D-R-M)**: Henry Co. IL, Mercer Co. IL, Rock Island Co. IL & Scott Co. IA **Decatur**: Macon Co. **Kankakee**: Kankakee Co. **Metro-East**: Bond Co., Calhoun Co., Clinton Co., Jersey Co., Macoupin Co., Madison Co., Monroe Co. & St. Clair Co. **Peoria-Pekin (Peoria)**: Marshall Co., Peoria Co., Stark Co., Tazewell Co. & Woodford Co. **Rockford**: Boone Co. & Winnebago Co. **Springfield**: Menard Co. & Sangamon Co.

The MSA data (unless noted) were seasonally adjusted to be consistent with state totals.

**ABOUT:** The Illinois Coalition for Jobs, Growth & Prosperity is a not-for-profit 501-c-4 organization. Coalition founding members include the Chicagoland Chamber of Commerce, the Illinois Business Roundtable, the Illinois Civil Justice League, the Illinois Manufacturers' Association, and the Illinois State Chamber of Commerce. Established to provide Illinois voters with information about government-related issues that have a direct effect on jobs, the Coalition represents firms employing more than a million Illinois workers.